

# Shaping Idaho's Future

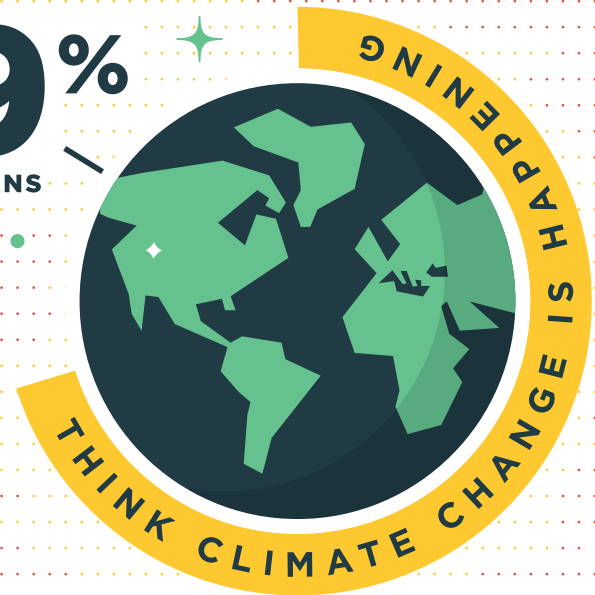
• IDAHO VOTERS WANT CLIMATE ACTION •

## CLIMATE CHANGE IS HAPPENING

A strong majority of Idaho voters think climate change is happening

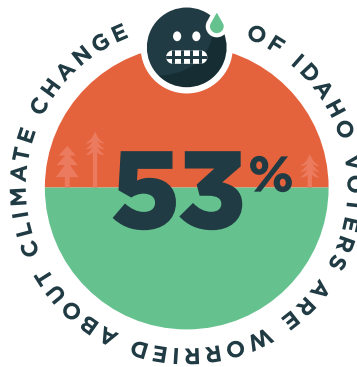
including a majority of Republicans, Independents, and Democrats.

69%  
OF IDAHOANS



## THE EFFECTS OF CLIMATE CHANGE

A majority of voters in Idaho say they are worried about climate change and that it is an important issue to them personally.



## IDAHO'S TOP CONCERNS

Water pollution, more intense wildfires, and fewer salmon are among Idaho voters' top concerns when it comes to the environment.



88%

POLLUTION OF IDAHO RIVERS, LAKES, STREAMS, & GROUNDWATER.



85%

BIGGER & MORE FREQUENT WILDFIRES.



77%

FEWER SALMON & STEELHEAD RETURNING TO IDAHO RIVERS.

## SUPPORT FOR CONSERVATION

THERE IS STRONG SUPPORT FOR CONSERVATION FOCUSED POLICIES ACROSS THE STATE.

Support conserving forests, farms, and wetlands that naturally remove pollution from the air.

89%

73%

61%

Support use of an all-of-the-above energy strategy that involves nuclear and renewable energy to slowly phase out fossil fuels such as coal, oil, and gas.

Support payments to farmers, ranchers, and forest landowners who voluntarily work to naturally remove pollution from the air.

Nearly 2/3 of Idaho voters think climate change will **harm** future generations.

2/3

## LET'S SOLVE THIS TOGETHER

Republicans, Independents, and Democrats agree that climate change can be solved if everyone works together, and that failing to address it will have a greater financial impact than the policies needed to address it.

62%

THINK IT CAN BE SOLVED BY

## WORKING TOGETHER

BY A 3 TO 2 MARGIN, MORE IDAHOANS THINK FAILING TO ADDRESS

THE ISSUE WILL LEAD TO HIGHER COSTS.

75%  
OF VOTERS

✓ WOULD BE MORE LIKELY TO SUPPORT AN ELECTED OFFICIAL WHO **FAVORS** POLICIES THAT ADDRESS CLIMATE CHANGE OR SAY THEIR VOTE WOULD NOT BE IMPACTED.

★ ★ SUPPORT ★ ★

- CONTACT US TO LEARN MORE -

# Shaping Idaho's Future

• IDAHO VOTERS WANT CLIMATE ACTION •



The Nature Conservancy in Idaho is dedicated to protecting our land, water, and ways of life by finding practical solutions to climate change. In February 2020, we conducted a statewide poll of 500 Idaho voters to better understand how Idahoans view climate change.\*

**A strong majority of Idaho voters believe that climate change is happening - including a majority of Democrats, Independents and Republicans.**

When it comes to your views about climate change, do you think it is happening, or do you think it is not happening?

- 68.8% believe it is happening
- 25.2% believe it is not happening

**Likewise, a majority of voters in Idaho say they are worried about climate change and say it is an important issue to them personally.**

How worried are you about climate change?

- 27.6% are very worried
- 25.0% are somewhat concerned
- 47.0% are not worried

How important is the issue of climate change to you personally?

- 24.6% extremely important
- 37% somewhat/very important
- 38.2% not too/not at all important

**Water pollution, more intense wildfires and fewer salmon are among Idaho voters' top concerns when it comes to the environment.**

Idaho has seen some changes over the past several decades. For each of the following changes, please tell me how concerned you are- very concerned, somewhat concerned, not very concerned, not all concerned.

- Pollution of Idaho rivers, lakes, streams, and groundwater: 87.6% Very or Somewhat Concerned
- Bigger and more frequent wildfires: 85.2% Very or Somewhat Concerned
- Fewer salmon and steelhead returning to Idaho rivers: 76.8% Very or Somewhat Concerned
- Inadequate or unpredictable water supply: 72.6% Very or Somewhat Concerned
- Public health risk caused by wildfire smoke: 72.6% Very or Somewhat Concerned
- Longer periods of drought conditions: 71.8% Very or Somewhat Concerned
- An increase in extreme temperature days: 57.2% Very or Somewhat Concerned

**While there is no consensus about how much they will personally be harmed by climate change, nearly 2/3 of voters see a moderate or great deal of harm for future generations.**

How much do you think climate change will harm you personally?

- 14.2% great deal of harm
- 25.8% moderate harm
- 26.2% a little harm
- 32.8% no harm at all

How much do you think climate change will harm future generations?

- 42.8% great deal of harm
- 20.2% moderate harm
- 16.0% a little harm
- 18.8% no harm at all

**There is strong support for conservation focused policies across the state.**

The following are some specific policies being discussed. After hearing each one, please tell me whether you support or oppose the policy.

- Conserve forests, farms and wetlands that naturally remove pollutions from the air.  
- Strongly: 63.8%; Strongly or Somewhat Support: 88.6%
- Provide payments to farmers, ranchers and forest landowners who voluntarily work to naturally remove pollution from the air.  
- Strongly: 37.8%; Strongly or Somewhat Support: 72.8%
- Use an "all-of-the-above" energy strategy that involves nuclear and renewable energy to slowly phase out fossil fuels such as coal, oil and gas.  
- Strongly: 34.4%; Strongly or Somewhat Support: 61.0%

**Above all, Democrats, Independents and Republicans agree that climate change can be solved if everyone works together, and a plurality of voters, including 1/3 of Republicans, think that failing to address climate change will have a greater financial impact than the policies needed to address it.**

Please tell me which view about climate change comes closer to your opinion?

- 62.4% believe that climate change is an issue that can be solved if everyone works together.
- 17.4% believe that it is an issue that can't be solved because it's past the point of fixing.

Which of the following will lead to greater costs?

- 47.2% believe that failing to address climate change, leading to more costly and destructive impacts, like wildfires, droughts and hazardous smoke will lead to greater costs.
- 32.0% believe that addressing climate change with policies that lead to things like higher gas and energy prices for Idaho consumers will lead to greater costs.

**Democrats, Independents, and Republicans also support elected officials who favor policies that address climate change with nearly 2/3 of Republicans saying they are more likely to support or it would have no impact on their support.**

Would you be more likely or less likely to support an elected official who favors policies that address climate change? If it would have an impact on your support, just say so.

- 47.2% More likely
- 27.8% No impact
- 21.4% Less likely

GS Strategy Group conducted this poll on behalf of The Nature Conservancy in Idaho. The telephone survey was conducted February 10-13, 2020 among 500 likely voters in Idaho. The margin of error for the survey is +/- 4.38% at the 95% confidence level.

**For more information please contact:**  
Kari Kostka, director of external affairs  
kari.kostka@tnc.org  
208.350.2204